

Technical Notice

Water heater storage tank life



2023

Hansen storage water heater tanks are made from 1100 Grade 2mm Aluminium. Aluminium is not resistant to corrosion. There are a number of different types of corrosion that can occur in aluminium hot water systems.

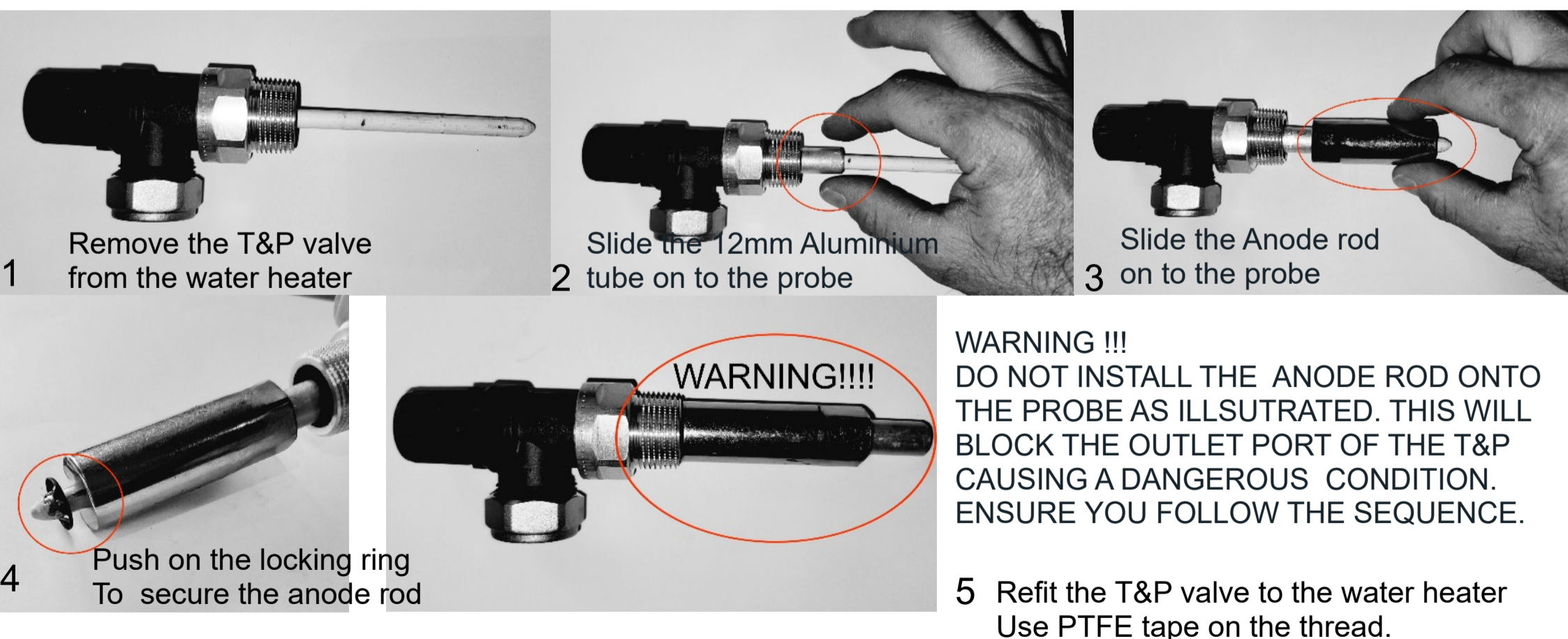
Water with high iron content or water with iron particles from rusting pipes can introduce corrosion. Camp sites with old pipe work could introduce rust particles into the tank. An inline sediment filter can be fitted to a filler hose to eliminate iron, lead, chlorides and unwanted sediments into your water heater tank. This will increase the life of the tank.

Water with high levels of chlorine will also cause premature damage to the water heater tank to prolong the life of the tank it is recommended to fit an activated carbon filter to your filling hose when filling water into your main tank. This will increase the life of the tank.

LACK OF REQUIRED MAINTENANCE WILL LEAD TO A BUILD UP OF CALCIUM, AND OTHER MINERALS WITHIN THE HOT WATER SYSTEM THIS WILL LEAD TO PREMATURE FAILURE. DO NOT flush with any chemicals, white vinegar can be used to flush the tank, introduce 1 cup of white vinegar into the main tank of water and flush the system.

To extend the life of your water heater tank we have developed a **magnesium anode kit** which can be fitted quickly into your water heater. A magnesium anode rod essentially sacrifices itself for the life of your hot water heater's tank. The anode rod's metal will give up electrons and corrode before metal of the tank will. As this lesser metal corrodes, electrons are distributed into the tank, creating a more favourable chemical environment that prevents the corrosion of the tank itself.

To fit the anode **CAREFULLY FOLLOW** the instructions.



IMPORTANT : Remember to fill the tank before connecting AC power or opening the gas bottles, failing to do so will damage the electric heating element or trigger then high temperature thermal cut out on gas rendering the water heater in operational.